



Meet the newest motherboard solution for LGA 1150, LGA 1151, LGA 1155, LGA 1156 and LGA 2011, it uses 1.2mm~2.0mm thickness high-grade sheet metal as main structure of chassis, durable and strong as well as the security features have been entirely considered, all parts including electronic components certified by international official approvals, and global 3 years warranty supported. The most major feature of this E350B chassis is the depth is merely 500mm, its cost effective but very high quality, standard equipped with three Sunon 80mmx25mm 2ball bearing fans, and two optional Sunon 60mmx25mm 2ball bearing fans installed at rear panel of chassis. The high end ABS front door with butterfly keylock and dust-prevent filter, the best solution for regular server or enterprise environment, welcome distribution world wide.

## Specification

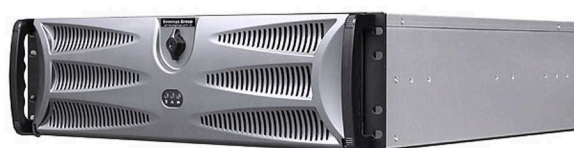
- \* 9 Drive capacity: 3 x 5.25" ODD (max. 220mm deep) and 6x 3.5" HDD bay
- \* HDD bay supported with anti-vibration function that HDD life time extended
- \* Main structure of sheet metal by high-class SGCC 1.2mm~2.0mm thickness
- \* Removable front door with security butterfly keylock and air filter function
- \* Equipped two USB 2.0 ports behind the front door
- \* Three brand new Sunon EE80251B1-000C-G99 80mmx25mm 2ball fans at front and rear
- \* Room noise without fan activated is 46dBA, tested by 10cm distance to the running fan is 77dBA (including room noise)
- \* Compatible motherboard form factor: ATX(12"x9.6"), MicroATX(9.6"x9.6"), Mini-ITX(6.7"x6.7")
- \* Support PS2 8cm or 12cm~14cm fan version psu (max. psu depth at 140mm~160mm)
- \* Support 7 slot full height expansion cards (max. 270mm deep)
- \* Standard paint: scratch-resistant Black textured at front
- \* Genesys Group branded server chassis model (with build-in fans) global 3 years warranty
- \* Chassis dimension: 19" x 3U x 500mm (19.69" deep)
- \* Accessory pack: M3 truss x6pcs, #6 round x38pcs, stand-off x10pcs, key x2pcs
- \* Package: NW 8.5 KGM, GW 11.5 KGM, 2.74 CUFT (63x56x22cm, single box packed)



## Ordering Information

Model#: E350B, 3U black ATX enterprise server chassis

- Option A: PS2 8cm or 12cm~14cm fan version power supply (max. psu depth at 140mm~160mm)
- Option B: SUNON6025, exhaust 60mm x 25mm fan installed above I/O shield of rear panel (part# is 1pcs)
- Option C-1: NJ-600, 600mm 2-layer 3-travel universal slide rail (part# is 1 pair, cabinet internal depth 600~1200mm compliant)
- Option C-2: 1234U-RMK, 1234U rear mounting kit (part# is 1 pair)
- Option D: 25-35-BK, 5.25" 3.5" 2.5" multiple HDD bracket
- Option E-1: 2525TO3HDBK, 2x5.25" ODD space to 3x3.5" bracket
- Option E-2: 3525TO5HDBK, 3x5.25" ODD space to 5x3.5" bracket
- Option E-3: RW425, 1x5.25" to 4x2.5" SAS/SATA Hot-Swap Cage
- Option E-4: RW825, 2x5.25" to 8x2.5" SAS/SATA Hot-Swap Cage
- Option E-5: RW1225, 3x5.25" to 12x2.5" SAS/SATA Hot-Swap Cage
- Option E-6: RW335, 2x5.25" to 3x3.5" SAS/SATA Hot-Swap Cage
- Option E-7: RW435, 3x5.25" to 4x3.5" SAS/SATA Hot-Swap Cage
- Option E-8: RW535, 3x5.25" to 5x3.5" SAS/SATA Hot-Swap Cage
- Option E-9: TL335, 2x5.25" to 3x3.5" TrayLess SAS/SATA Hot-Swap Cage
- Option E-10: TL435, 3x5.25" to 4x3.5" TrayLess SAS/SATA Hot-Swap Cage
- Option E-11: TL535, 3x5.25" to 5x3.5" TrayLess SAS/SATA Hot-Swap Cage
- Option E-12: TL135, 1x5.25" to 1x3.5" TrayLess SAS/SATA Hot-Swap Cage
- Option E-13: RW135, 1x5.25" to 1x3.5" SAS/SATA Hot-Swap Cage
- Option E-14: SFF-8087 Cable, 1MSAS-4SATA-500MM, SFF-8087 Mini-SAS (Host) to Four SATA (Device) cable
- Option F-1: RW425-12G, 1x5.25" to 4x2.5" SAS12G Hot-Swap Cage
- Option F-2: RW825-12G, 2x5.25" to 8x2.5" SAS12G Hot-Swap Cage
- Option F-3: RW1225-12G, 3x5.25" to 12x2.5" SAS12G Hot-Swap Cage
- Option F-4: SFF-8643 Cable, SFF-8643-500MM, SFF-8643 MiniSAS HD (Host) to MiniSAS HD (Device) cable



Latest updated on August 19, 2016